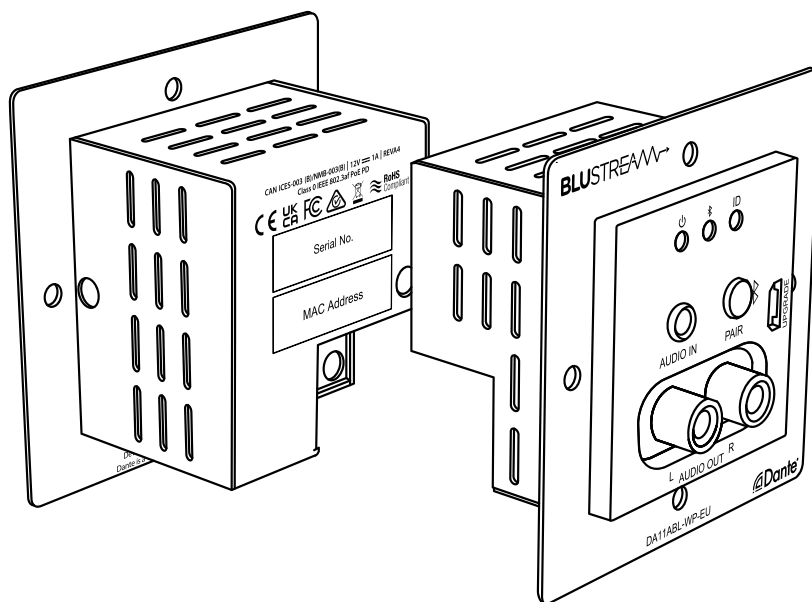


DA11ABL-WP-EU

Quick Reference Guide



Introduction

The DA11ABL-WP-EU is a multi-input / output wall plate to convert Bluetooth and analogue audio within a digital Dante® networked audio system. The DA11ABL-WP-EU converts 2 x input channels of Bluetooth, or unbalanced audio to Dante® digital audio, and 2 x channels of Dante® audio to 2 x output channels of unbalanced audio.

The DA11ABL-WP-EU is a plug & play device that is powered using PoE (Power over Ethernet), or via 12V power supply, offers support for AES67 RTP audio transport, and magnetic faceplate design allows for both UK & EU backbox compatibility. The DA11ABL-WP-EU is the ideal BYOD interface to allow any Bluetooth device to stream audio wirelessly to a Dante® audio system.

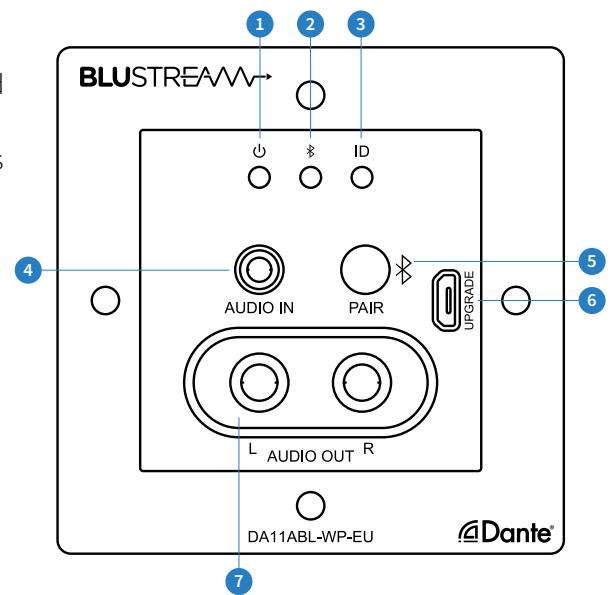
FEATURES:

- Dante® network wall plate interface for Bluetooth and analogue L/R audio inputs, and L/R audio outputs
- Converts 2ch Bluetooth, or un-balanced audio sources to Dante® audio
- Converts 2x Dante® audio channels to un-balanced audio outputs
- Adjustable input sensitivity from +24dBu to -28dBV via control software
- Adjustable output gain from +20dBu to -28 dBV via control software
- Supports: 44.1, 48 & 96kHz sample rates @ 16, 24 or 32 Bit
- Configurable Dante® device latency (supports 1, 2 or 5ms configurable using Dante® Controller)
- Supports AES67 RTP audio transport
- Features Class 0 IEEE 802.3af PoE for powering of product from any PoE switch
- Supports power via 12V DC adapter (supplied) for when network switch does not support PoE
- Magnetic faceplate surround allowing for both UK & EU backbox compatibility

Front Panel

Connections:

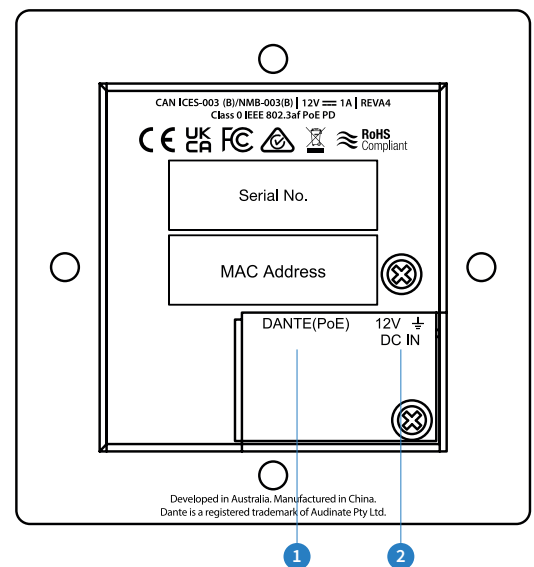
- 1 Power Status Indicator - Illuminates when the device is powered on power input
- 2 Bluetooth Status Indicator - Illuminates when Bluetooth device is connected
- 3 ID LED Indicator - Flashes when this device is identified through Dante® Configurator
- 4 Analogue Audio Input - 3.5mm stereo jack for unbalanced analogue audio input
- 5 Bluetooth Pair Button - Press to make device discoverable for Bluetooth pairing, press 2 to 3 times to change audio source selection
- 6 Micro USB Port - Used for software control and firmware updates
- 7 Analogue Audio Output - RCA L / R connector unbalanced analogue audio output



Rear Panel

Connections:

- 1 Dante® Network Connection (PoE) - RJ45 connection to connect to network switch
- 2 Power Port – Use 12V/1A DC adaptor (not included) when PoE is not available to power device



Bluetooth

Bluetooth 5.0 technology allows for 2x simultaneous connections from source audio devices, where the selected devices audio is received and sent into the Dante network.

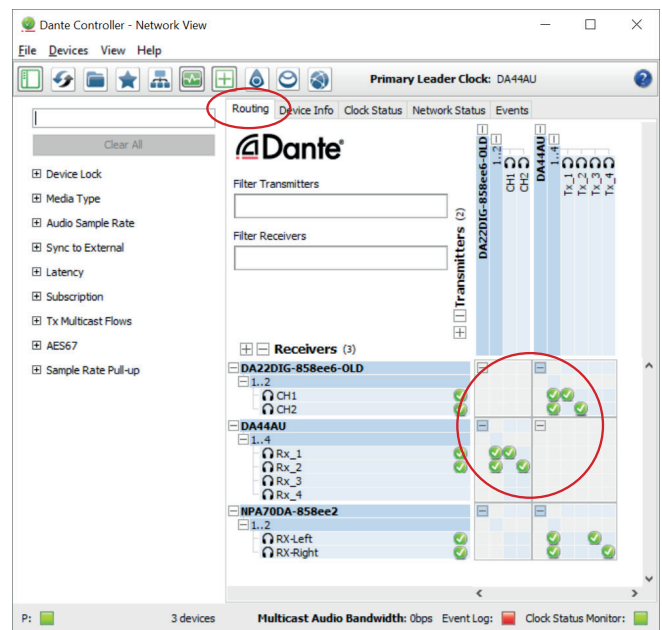
To connect a Bluetooth enabled device to the DA11ABL-WP-EU, press the Pair button on there unit, go to the Bluetooth settings of the source audio device, and enable Bluetooth connectivity. The DA11ABL-WP-EU will appear in the list of available devices.

Dante® Controller

Dante® Controller software is required in order to set up and configure the DA11ABL-WP-EU as well as control the Dante® network. Audinate provide extensive training videos and documentation on their website. This can be found here: <http://www.audinate.com/products/software/dante-controller>

Upon connecting your DA11ABL-WP-EU to a compatible network, the Dante® Controller software should automatically discover the device. The DA11ABL-WP-EU will appear in the Dante® Controller with a name prefixed with “DA11ABL-WP-EU”. On the “Routing” screen you can create audio routing between Dante® transmitters and receivers in the system.

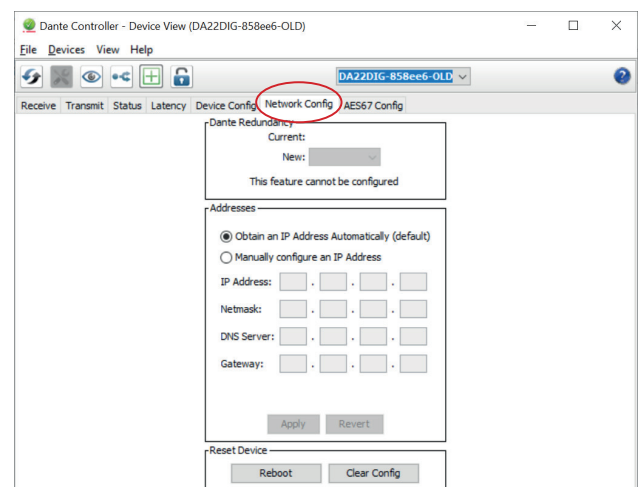
Please ensure your PC is on the same network as your Dante® devices. Dante® is not able to transmit over WiFi, and it is recommended to hardwire into the Dante® network. Having multiple network devices enabled can also confuse the Dante® Controller software so it is recommended to disable WiFi during configuration.



Advanced Dante® Settings

By default the DA11ABL-WP-EU is shipped with its network settings set to obtain an IP address automatically. This means that if a DHCP server is present on your network, it will provide the DA11ABL-WP-EU with an IP address. If no DHCP server is present then the DA11ABL-WP-EU will receive a default IP address in the 169.254.xxx.xxx range.

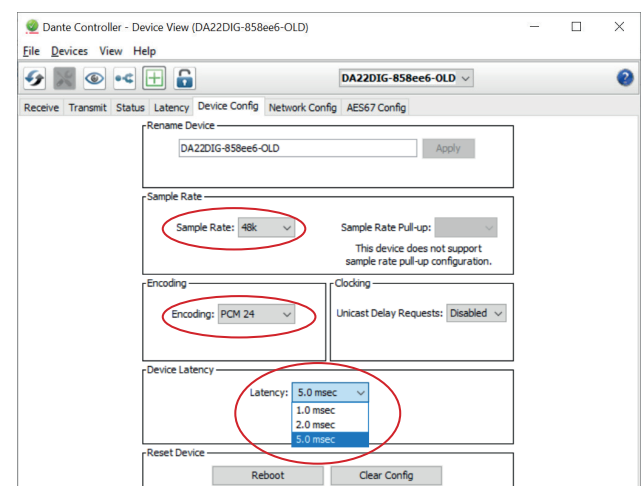
To change the IP address of the DA11ABL-WP-EU, you must enter the “Network Config” menu in the “Device Info” screen of the Dante® Controller software.



It is also possible to change the settings of the DA11ABL-WP-EU under the “Device Info” screen in the Dante® Controller software. To do so, select the “Device Config” menu.

The sample rate of the DA11ABL-WP-EU can be adjusted here. **Please note:** Dante® products can only transmit or receive audio from other Dante® products that are set up with the same sample rate. A mismatch in sample rate may stop audio from transmitting.

Under the “Device Config” screen we can also adjust the latency of the DA11ABL-WP-EU from 1, 2 or 5 milliseconds.



Specifications

- Audio Input Connectors:** 1 x Analogue Left / Right audio (3.5mm stereo jack)
- Audio Output Connectors:** 2 x Analogue RCA (Left / Right)
- Network Connectors:** 1 x PoE Dante® Ethernet Connection (RJ45)
- Bluetooth:** Bluetooth V5.0 - SBC / MP3 / AAC / APT-X / APTX-LL / APTX-HD, 44.1K-48KHz 16 / 24Bit
- Configuration Switches:** 1 x Push button (connect / selection)
- Firmware Upgrade:** 1 x Micro-USB UART port
- Module Dimensions (W x H x D):** 74mm x 74mm x 50mm (without faceplate)
- Faceplate Dimensions (W x H x D):** 85mm x 85mm x 5mm
- Cut Out Dimensions (W x H x D):** 52mm x 55mm x 38mm
- Mounting Hole Spacing:** UK 60mm CTC, EU 60mm CTC
- Backbox Requirements:** UK single gang backbox / EU single gang backbox
- Shipping Weight:** 0.3kg
- Operating Temperature:** 32°F to 104°F (0°C to 40°C)
- Storage Temperature:** - 4°F to 140°F (- 20°C to 60°C)
- Power Supply:** Class 1 IEEE 802.3af POE PD or 12V/1A DC, 2-Pin Phoenix connector

Package Contents

- 1 x DA11ABL-WP-EU
- 1 x Magnetic Faceplate
- 1 x Quick Reference Guide

Acknowledgements

Dante® is a registered trademark of Audinate Pty Ltd.

Certifications

FCC NOTICE

This equipment has been tested and found to comply with the limits for a Class B digital device, pursuant to part 15 of the FCC Rules. These limits are designed to provide reasonable protection against harmful interference in a residential installation. This equipment generates, uses, and can radiate radio frequency energy and, if not installed and used in accordance with the instructions, may cause harmful interference to radio communications. However, there is no guarantee that interference will not occur in a particular installation. If this equipment does cause harmful interference to radio or television reception, which can be determined by turning the equipment off and on, the user is encouraged to try to correct the interference by one or more of the following measures:

- Reorient or relocate the receiving antenna.
- Increase the separation between the equipment and receiver.
- Connect the equipment into an outlet on a circuit different from that to which the receiver is connected.
- Consult the dealer or an experienced radio/TV technician for help.

CAUTION - changes or modifications not expressly approved by the party responsible for compliance could void the user's authority to operate the equipment.

CANADA, INDUSTRY CANADA (IC) NOTICES

This Class B digital apparatus complies with Canadian ICES-003. Operation is subject to the following two conditions: (1) this device may not cause interference, and (2) this device must accept any interference, including interference that may cause undesired operation of the device.

CORRECT DISPOSAL OF THIS PRODUCT

This marking indicates that this product should not be disposed with other household wastes. To prevent possible harm to the environment or human health from uncontrolled waste disposal, recycle it responsibly to promote the sustainable reuse of material resources. To return your used device, please use the return and collection systems or contact the retailer where the product was purchased. They can take this product for environmentally safe recycling.

RF EXPOSURE

To maintain compliance with FCC's RF Exposure guidelines, This equipment should be installed and operated with minimum distance between 20cm the radiator your body: Use only the supplied antenna.

CANADA, INDUSTRY CANADA (IC) NOTICES

This device contains licence-exempt transmitter(s)/receiver(s) that comply with Innovation, Science and Economic Development Canada's licence-exempt RSS(s). Operation is subject to the following two conditions:

This device may not cause interference.

This device must accept any interference, including interference that may cause undesired operation of the device.

This equipment should be installed and operated with minimum distance 20cm between the radiator and your body.

L'émetteur/récepteur exempt de licence contenu dans le présent appareil est conforme aux CNR d'Innovation, Sciences et Développement économique Canada applicables aux appareils radio exempts de licence. L'exploitation est autorisée aux deux conditions suivantes :

L'appareil ne doit pas produire de brouillage;

L'appareil doit accepter tout brouillage radioélectrique subi, même si le brouillage est susceptible d'en compromettre le fonctionnement.

Cet équipement doit être installé et utilisé avec une distance minimale de 20 cm entre le radiateur et votre corps.