

# BLUSTREAM

## PRODUCT CATALOGUE 2026



## AV Distribution Without Compromise

# BLUSTREAM

# 10

YEAR

# ANNIVERSARY



Global HQ Melbourne, Australia

## About Blustream

Founded in Melbourne, Australia, Blustream is the creation of an ambitious team of AV product managers. Utilising a wealth of experience within the consumer electronics and multi-room AV industry, the team takes pride in delivering AV distribution products that offer more for the AV architect and installer, more in terms of performance and reliability, and more in terms of value for money.

Our regional headquarters are strategically located in Australia, the UK, Spain, and the USA. From these locations, our experienced product managers are readily available to provide real-time sales and technical support to our customers. With state-of-the-art testing and training facilities, we ensure our products can be installed with unmatched confidence. Additionally, we proudly offer 24/6 technical support through phone, email, and live chat, delivering exceptional service to our sales partners worldwide.

## Global Presence

Collaborating with a product development team across three continents gives us a unique advantage in gathering essential market feedback from a global perspective. This approach has allowed us to create a range of distribution solutions with unmatched real-world features, enhancing the performance and adaptability of AV products in any installation environment.

## Why choose Blustream?



Industry leading performance and reliability



Products supported by a standard 5 year warranty



Extensive roadmap for new product development



24/6 technical support for total peace-of-mind



Local warehousing enables next day delivery to most regional locations



# Contents

---

## Video over IP

5-16

Award winning Video over IP solutions delivering almost unlimited scalability in any installation environment.

---

## HDBaseT™ Solutions

17-30

Comprehensive portfolio of HDBaseT™ solutions engineered with cutting-edge features.

---

## Custom Pro Matrix

31-36

AV integrators can easily customise the required I/O structure and any additional control features for their AV project.

---

## HDMI Distribution

37-48

A diverse range of HDMI solutions engineered for robust video performance and industry leading longevity.

---

## USB & KVM Solutions

49-56

Blustream solutions with additional USB / KVM integration, including NEW HDBaseT USB3.2 Gen1 extension.

---

## Dante® Solutions

57-64

Specialised range of Dante® networked audio amplifiers, converters and wall plates.

---

## Audio Solutions

65-72

Audio distribution solutions including matrix, DAC's, Down-scalers, Lip sync correction and Bluetooth integration.

---

## Power Management

73-76

Install a smart PDU with your AV system to add advanced features including scheduling, sequencing and power consumption.

---

## HDMI Cables

77-80

Our latest range of certified 18Gbps and 48Gbps 8K HDMI cable solutions.

# AV Over IP

- New ACM1000 Advanced Control Module
- SDVoE - 4K 60Hz 4:4:4 over 10Gbps Network
- 4K 60Hz 4:4:4 over 1Gbps Network
- 4K 60Hz 4:2:0 over 1Gbps Network
- HD Video over 100Mbps Network
- Advanced Control Module & Accessories



Dante AV-A™



NEW

HDMI™



### ACM1000

#### Advanced Control Module

Built on the foundation of our existing ACM platform, the ACM1000 continues to deliver the powerful core functionality our AV over IP customers rely on every day. These include one-touch configuration, intuitive drag-and-drop control via the web interface, and fully independent routing of video, audio, serial, IR, USB/KVM, and CEC signals.

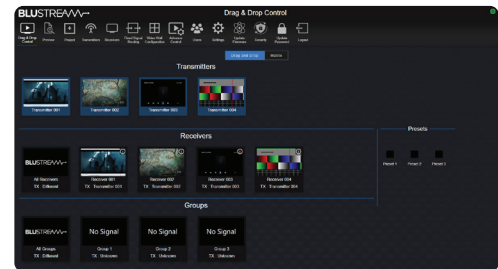
The new ACM1000 introduces a complete rebuild of both the control module hardware and supporting management software. Powered by a quad-core processor, this next-generation platform unlocks a number of new intuitive features including 24/7 scheduling, enhanced source and display control, simultaneous switching, advanced presets, and pre-configured macro control. Together, these enhancements deliver greater automation, faster workflows, and a more intelligent control experience across the entire AV system.

#### Key Features

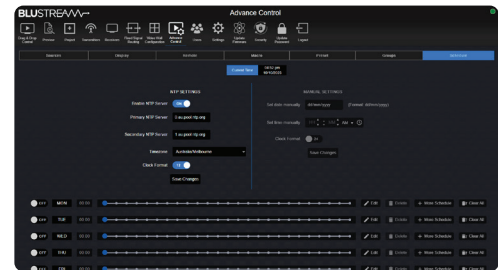
- Web interface module for configuration and control of Blustream AV over IP systems
- Intuitive 'Drag & Drop' source selection with video preview feature for active monitoring of system status
- Advanced signal management for independent routing of video, audio, IR, RS-232, USB/KVM, and CEC (AVoIP platform dependent)
- Dual RJ45 LAN connections to bridge business / home network to AV over IP video distribution network, resulting in:
  - Better system performance as network traffic is separated (different networks, or VLAN's)
  - No advanced network setup required
  - Independent IP address per LAN connection
  - Allows for simplified TCP / IP control of AV over IP system

- Dual RS-232 ports for control of the AV over IP system, and passthrough of control commands to remote third party devices
- 5V/12V IR integration for control of AV over IP system
- Configurable GPIO ports for integration with 3rd party products
- Direct control command processing allowing IP to IR, serial or CEC to any end point in the system
- GUI based source and display remote for direct control using IR, serial and CEC

Video over IP



Intuitive 'Drag & Drop' source selection with video preview



24/7 scheduling functionality





### IP500UHD-TZ

UHD Video Transceiver over 10Gb Managed Network

- SDVoE - 4K 60Hz 4:4:4 over 10Gbps Network with zero latency
- Selectable transceiver - can be an encoder or decoder
- Scaled output, Video Wall, Multi-View, 1Gbps LAN, USB 1.1 for KVM
- SFP+, EDID Management, Bi-directional IR & RS-232, PoE+



### IP510UHD-TZ

Simultaneous UHD Video Transceiver over 10Gb Managed Network

The Blustream IP510UHD Transceiver is a SDVoE compliant AV over IP solution that provides the highest-quality, uncompromised 4K with zero latency Audio/ Video extension over copper or optical fibre 10G network. The IP510UHD-TZ includes support for HDMI 2.0 including distribution of HDR (High Dynamic Range), 10/12-bit colour content and multi-channel HD audio signals.

The IP510UHD-TZ delivers advanced features including transmission of multiple control and data signals alongside audio and video, including IR, RS-232, USB1.1 (KVM), 1Gb Ethernet, and powered over PoE+.

#### Key Features

- Advanced 18Gbps UHD Video over 10Gb network with visually lossless compression and zero latency
- Supports bitstream passthrough of multichannel surround sound including object-based audio formats in line with HDMI specifications
- Supports video scaling and seamless switching
- Features 4 operational modes:
  - Matrix distribution (requires 10Gb network switch)
  - Video wall (requires 10Gb network switch)
  - Multi-view mode (requires 10Gb network switch)
  - One-to-one HDMI extender (no network switch required)
- Supports fixed signal routing function for IR, RS-232, CEC and USB



### ACM500

Advanced Control Module for IP500 Series Multicast Systems

- Web interface module for configuration and control of Blustream IP500UHD and IP510UHD SDVoE 10Gb Multicast systems
- Intuitive 'drag & drop' source selection with video preview feature for active monitoring of system status



HDMI™ Dante®



### IP350UHD-TX

Dante® enabled 4K 60Hz 4:4:4 video over 1Gb Network - Transmitter

- 4K 60Hz 4:4:4 over 1Gbps Network with 1-frame latency
- Dante, Audio Embedding / Breakout, EDID Management
- SFP, Bi-directional USB / KVM, IR & RS-232, PoE
- Compatible with IP350UHD-RX, IP300UHD-TX & RX

HDMI™ Dante AV-A™



### IP300UHD-TX

4K 60Hz 4:4:4 video over 1Gb Network - Transmitter

- 4K 60Hz 4:4:4 over 1Gbps Network with 1-frame latency
- Audio Embedding / Breakout, EDID Management
- SFP, Bi-directional USB / KVM, IR & RS-232, PoE
- Compatible with IP300UHD-RX, IP350UHD-TX & RX

Video over IP

HDMI™ Dante®



### IP350UHD-RX

Dante® enabled 4K 60Hz 4:4:4 video over 1Gb Network - Receiver

- 4K 60Hz 4:4:4 over 1Gbps Network with 1-frame latency
- Dante, Audio Breakout, Scaled output, Video Wall capabilities
- SFP, Bi-directional USB / KVM, IR & RS-232, PoE
- Compatible with IP350UHD-TX, IP300UHD-TX & RX

HDMI™ Dante AV-A™



### IP300UHD-RX

4K 60Hz 4:4:4 video over 1Gb Network - Receiver

- 4K 60Hz 4:4:4 over 1Gbps Network with 1-frame latency
- Audio Breakout, Scaled output, Video Wall capabilities
- SFP, Bi-directional USB / KVM, IR & RS-232, PoE
- Compatible with IP300UHD-TX, IP350UHD-TX & RX



### IP300UHD-WP-TX

4K HDMI & USB-C Video over IP Wall Plate - Transmitter

- 4K 60Hz 4:4:4 over 1Gb Network
- HDMI & USB-C Video inputs
- Advanced EDID Management
- USB-C PD power input



HDMI™ Dante®



**IP250UHD-TX**

Dante® enabled 4K video over 1Gb Network - Transmitter

- 4K 60Hz 4:2:0 over 1Gbps Network with 1-frame latency
- Dante, Audio Embedding / Breakout, EDID Management
- SFP, Bi-directional USB / KVM, IR & RS-232, PoE
- Compatible with IP250UHD-RX, IP200UHD-TX & RX



HDMI™



**IP200UHD-TX**

4K video over 1Gb Network - Transmitter

- 4K 60Hz 4:2:0 over 1Gbps Network with 1-frame latency
- Audio Embedding / Breakout, EDID Management
- Bi-directional USB / KVM, IR & RS-232, PoE
- Compatible with IP200UHD-RX, IP250UHD-TX & RX



HDMI™ Dante®



**IP250UHD-RX**

Dante® enabled 4K video over 1Gb Network - Receiver

- 4K 30Hz over 1Gbps Network with 1-frame latency
- Dante, Audio Breakout, Scaled output, Video Wall capabilities
- SFP, Bi-directional USB / KVM, IR & RS-232, PoE
- Compatible with IP250UHD-TX, IP200UHD-TX & RX



HDMI™



**IP200UHD-RX**

4K video over 1Gb Network - Receiver

- 4K 30Hz over 1Gbps Network with 1-frame latency
- Audio Breakout, Scaled output, Video Wall capabilities
- Bi-directional USB / KVM, IR & RS-232, PoE
- Compatible with IP200UHD-TX, IP250UHD-TX & RX







**IP50HD-TX**

Contractor Series HD Video Transmitter over 100Mbps Network

- 1080p with 2ch audio over 100Mbps Network
- Audio Embedding / Breakout, EDID Management
- Bi-directional USB 1.1 for KVM, IR & RS-232, PoE



**IP50HD-RX**

Contractor Series HD Video Receiver over 100Mbps Network

- 1080p 2ch audio over 100Mbps Network
- Audio Breakout, Scaled output
- Bi-directional USB 1.1 for KVM, IR & RS-232, PoE



Video over IP



**ACM210**

Advanced Control Module

- Web interface module for configuration and control of IP50, IP200, IP250, IP300, and IP350UHD Blustream AV over IP systems
- Intuitive 'drag & drop' source selection with video preview feature for active monitoring of system status
- Auto system configuration



**RSU-2RU**

Universal 2U Rack Shelf Unit

- 2U 19" AV over IP Rack Mount Unit
- Mounts 4 x AV over IP transmitter or receiver products



**RSU-3RU**

Universal 3RU Rack Shelf Unit

- 3RU 19" AV over IP Rack Mount Unit
- Mounts 4 x Multicast IP510UHD-TZ transceiver products



**RSU-6RU**

Universal 6U Rack Shelf Unit with 8 x Vertical Blade Shelves

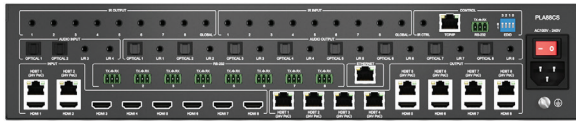
- 6U 19" rack shelf enclosure
- 8 x removable vertical blade shelves with ventilation



# HDBaseT™ Solutions

- Platinum HDBaseT™ Matrix
- HDBaseT™3 Matrix
- Essential 4K HDBaseT™ AV Matrix
- Contractor Series HDBaseT™ Matrix
- HDBaseT™ Splitter & Switcher
- HDBaseT™ Wall Plate Transmitters
- HDBaseT™3 Extender Sets
- HDBaseT™ Extender Sets





### PLA88CS

Platinum 8x8 HDBaseT™ CSC AV Matrix with Audio Downmixing - 150m

The PLA88CS is a 4K HDMI 2.0 8x8 Matrix, distributing HDMI, ARC, LAN, Bi-directional IR / RS-232 and PoC up to lengths of 150m (1080p) over a single CAT cable.

Advanced optional features include dual HDMI and HDBaseT™ outputs featuring CSC for support of 4K resolutions including 4K 60Hz 4:4:4 colour space, and HDR, with independent down-scaling of 4K video to allow those displays only capable of supporting lower video resolutions to receive 4K video while still showing maximum original UHD resolution on the higher-definition displays.

#### Key Features

- Advanced HDBaseT™ technology offering distribution of video and audio over a single CAT cable
- Advanced Colour Space Conversion (CSC) supports HDMI 2.0 18Gbps specification including HDR
- 4x Simultaneous HDBaseT™ and HDMI outputs to allow connection to dual displays per zone
- Extends HDMI up to distance of 150m at 1080p, and 4K UHD video up to 100m (up to 4K 60Hz 4:4:4) using LRM (Long Range Mode)



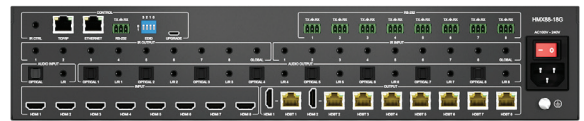
#### Recommended TX and RX:

##### TX150CS - Long Range CSC Transmitter

Advanced HDBaseT™ Transmitter supporting uncompressed and unconverted HDMI 2.0 4K 60Hz 4:4:4 up to 100m

##### RX150CS - Long Range CSC Receiver

Advanced HDBaseT™ Receiver supporting uncompressed and unconverted HDMI 2.0 4K 60Hz 4:4:4 up to 100m



### HMx88-18G

8x8 HDBaseT™3 AV Matrix

- Uncompressed / unconverted 4K 60Hz 4:4:4 to 100m
- HDMI / Optical Audio Return, Audio Embedding & Breakout
- 2x dual HDMI/HDBT outputs, Bi-directional RS-232, IR, PoC to RX

#### Recommended RX:

##### RX18G - HDBaseT™3 Receiver

Advanced HDBaseT™ Receiver supporting uncompressed and unconverted HDMI 2.0 4K 60Hz 4:4:4 up to 100m



### HMx44-18G-KIT

4x4 HDBaseT™3 AV Matrix Kit

- Uncompressed / unconverted 4K 60Hz 4:4:4 to 100m
- HDMI / Optical Audio Return, Audio Embedding & Breakout
- 1x dual HDMI/HDBT output, Bi-directional RS-232, IR, PoC to RX



#### Supplied with:

##### RX18G - HDBaseT™3.0 Receiver

Advanced HDBaseT™ Receiver supporting uncompressed and unconverted HDMI 2.0 4K 60Hz 4:4:4 up to 100m

HDBaseT™ Solutions



### HMXL88ARC

8x8 HDBaseT™ CSC ARC Matrix - 70m

- 4K 60Hz 4:4:4 using CSC to 40m (70m at 1080p)
- HDMI / Optical Audio Return, Audio Embedding & Breakout
- 1x dual HDMI/HDBT output, Bi-directional RS-232, IR, PoC to RX



### HMXL44ARC-KIT

4x4 HDBaseT™ CSC ARC Matrix Kit - 4K 60Hz 4:4:4

- 4K 60Hz 4:4:4 using CSC to 40m (70m at 1080p)
- HDMI / Optical Audio Return, Audio Embedding & Breakout
- 1x dual HDMI/HDBT output, Bi-directional RS-232, IR, PoC to RX



HDBaseT™ Solutions



### HMXL66ARC

6x6 HDBaseT™ CSC ARC Matrix - 70m

- 4K 60Hz 4:4:4 using CSC to 40m (70m at 1080p)
- HDMI / Optical Audio Return, Audio Embedding & Breakout
- 1x dual HDMI/HDBT output, Bi-directional RS-232, IR, PoC to RX



### HMXL42ARC-KIT

4x2 HDBaseT™ CSC ARC Matrix Kit - 70m

- 4K 60Hz 4:4:4 using CSC to 40m (70m at 1080p)
- HDMI / Optical Audio Return, Audio Breakout
- 1x dual HDMI/HDBT output, Bi-directional RS-232, IR, PoC to RX



Recommended with the HMXL88ARC / HMXL66ARC:

**RX70CS** - HDBaseT™ CSC Receiver - 70m

HDBaseT™ Receiver supporting 4K 60Hz 4:4:4 (18Gbps)

Receiver supplied with the HMXL44ARC-KIT / HMXL42ARC-KIT:

**RX70CS** - HDBaseT™ CSC Receiver - 70m

HDBaseT™ Receiver supporting 4K 60Hz 4:4:4 (18Gbps)



**C88CS**

Contractor 8x8 HDBaseT™ CSC Matrix - 70m

- 4K 60Hz 4:4:4 using CSC to 40m (70m at 1080p)
- Bi-directional IR, PoC to RX
- EDID Management, IP, RS-232 & IR control



**C66CS**

Contractor 6x6 HDBaseT™ CSC Matrix - 70m

- 4K 60Hz 4:4:4 using CSC to 40m (70m at 1080p)
- Bi-directional IR, PoC to RX
- EDID Management, IP, RS-232 & IR control

**Recommended Receiver with C88CS and C66CS:**

**RX70CS** - HDBaseT™ CSC Receiver - 70m

HDBaseT™ Receiver supporting 4K 60Hz 4:4:4 (18Gbps)



**C44CS-KIT**

Contractor 4x4 HDBaseT™ CSC Matrix Kit - 70m

- 4K 60Hz 4:4:4 using CSC to 40m (70m at 1080p)
- Bi-directional IR, PoC to RX
- EDID Management, IP, RS-232 & IR control
- Supplied with 4x RX70CSL receivers



**HSP14CS**

4-Way HDBaseT™ CSC Splitter - 70m

- 4K 60Hz 4:4:4 using CSC to 40m (70m at 1080p)
- Audio Breakout & EDID Management
- Bi-directional IR & RS-232, PoC to RX

**Recommended RX:**

**HEX70CS-RX** - HDBaseT™ CSC Receiver - 70m

HDBaseT™ Receiver supporting 4K 60Hz 4:4:4 (18Gbps)



**SW41HDBT**

4-Way HDBaseT™ / HDMI Input Switch

- 2 x HDMI 2.0 & 2 x HDBaseT™ inputs which can be auto-switched to simultaneous HDBaseT™ / HDMI outputs
- 4K 60Hz 4:4:4 using CSC to 40m (70m at 1080p)
- Audio Breakout, IP, RS-232 & IR control

**Recommended TX:**

**HEX11WPW-TX** - HDMI Wall Plate HDBaseT™ Transmitter

HDBaseT™ Wall Plate Transmitter supporting 4K 60Hz 4:2:0 to 40m

**Recommended RX:**

**RX70CS** - HDBaseT™ CSC Receiver - 70m

HDBaseT™ Receiver supporting 4K 60Hz 4:4:4 (18Gbps)

HDBaseT™ Solutions



US



EU/UK



US



EU/UK

## HEX31WPW-TX-US / EU

### 2 x HDMI & 1 x USB-C Wall Plate HDBaseT™ Transmitter

Our HEX31WPW-TX HDMI/USB-C wall plate HDBaseT™ Transmitter is a multi-format 4K input switcher solution delivering HDMI and USB-C inputs up to 70m at 1080p (40m 4K 60Hz 4:2:0). The HEX31WPW-TX features both manual or automated source selection and includes display on / off control via CEC, RS-232 and IR (via compatible HDBaseT™ receivers / Matrix).

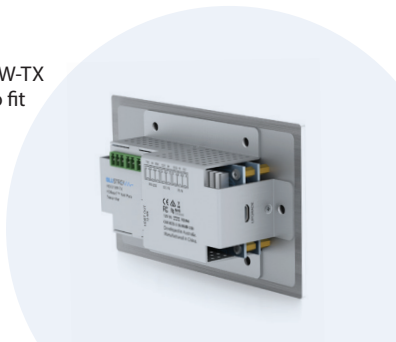
#### Key Features

- 2 x HDMI & 1x USB-C inputs with manual / auto source selection
- Advanced HDBaseT™ technology offering distribution of video and audio over a single CAT cable
- Supports 4K UHD video up to 40m (3840 x 2160 @30Hz 4:4:4, 4096 x 2160 @24Hz 4:4:4, and 4K @60Hz 4:2:0)
- Extends HDMI at 1080p up to a distance of 70m



#### Mounting the Wall Plates

Our HEX31WPW-TX / HEX11WPW-TX are available in differing sizes to fit into US Decora or UK / EU style back boxes.



## HEX11WPW-TX-US / EU

### HDMI Wall Plate HDBaseT™ Transmitter

Our HEX11WPW-TX HDMI Wall Plate HDBaseT™ Transmitter is a 4K solution that extends HDMI up to 70m at 1080p (40m 4K 60Hz 4:2:0). The HEX11WPW-TX has been designed to work with all Blustream HDBaseT™ receiver and matrix solutions, can be installed in US, UK and European back boxes, and can be powered locally or from compatible Blustream HDBaseT™ products.

#### Key Features

- Advanced HDBaseT™ technology offering distribution of video and audio over a single CAT cable
- Supports IR pass-through to HDBaseT™ receiver / matrix device
- Supports 4K UHD video up to 40m (3840 x 2160 @30Hz 4:4:4, 4096 x 2160 @24Hz 4:4:4, and 4K @60Hz 4:2:0)
- Extends HDMI at 1080p up to a distance of 70m



#### Recommended RX (no RS-232):

##### HEX70SL-RX - Slimline HDBaseT™ Receiver - 70m

HDMI, Bi-directional IR and Bi-directional PoC up to lengths of 70m

#### Recommended RX (with RS-232):

##### HEX70CS-RX - HDBaseT™ CSC Receiver - 70m

HDBaseT™ Receiver supporting 4K 60Hz 4:4:4 (18Gbps)



### HEX18GARC-KIT

Advanced HDBaseT™ Extender Set - 100m at 4K

- Uncompressed / unconverted 4K 60Hz 4:4:4 to 100m
- HDMI eARC/ARC, Optical Audio Return
- 1Gbps LAN, RS-232, IR, USB / KVM, Bi-directional PoC



### HEX150CS-KIT

HDBaseT™ CSC Extender Set - 150m

- 4K 60Hz 4:4:4 using CSC to 100m (150m at 1080p)
- HDMI ARC, Optical Audio Return, Audio Breakout
- 100Mbps LAN, RS-232, IR, Bi-directional PoC



HDBaseT™ Solutions



### HEX18G-KIT

Uncompressed 18Gbps HDBaseT™ Extender Set - 100m

- Uncompressed / unconverted 4K 60Hz 4:4:4 to 100m
- Bi-directional RS-232 & IR
- Bi-directional PoC



### HEX100CS-KIT / HEX70CS-KIT

HDBaseT™ CSC Extender Sets

- 4K 60Hz 4:4:4 using CSC
- HDMI Loop out on TX
- Bi-directional RS-232, IR & PoC

HEX100CS-KIT - 70m at 4K, 100m at 1080p

HEX70CS-KIT - 40m at 4K, 70m at 1080p





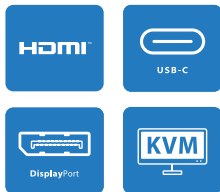
### HEX70HDKIT

Multi-format HDBaseT™ CSC Extender Set - 70m

The HEX70HDKIT extender set is an industry leading HDMI 2.0 4K 60Hz 4:4:4 (18Gbps) HDCP 2.2 HDBaseT™ multi-format solution utilising CSC technology to deliver HDMI, USB-C and DisplayPort™ up to lengths of 40m (70m at 1080p) over a single CAT cable.

#### Key Features

- 4K 60Hz 4:4:4 using CSC to 40m (70m at 1080p)
- HDMI, USB-C & Display Port Inputs
- USB / KVM, RS-232, IR, Bi-directional PoC



### HEX70HDKIT-TT

Table Top Enclosure for HEX70HDKIT



### HEX70USBKIT

HDBaseT™ USB Extender Set - 70m

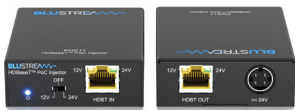
- 4K 60Hz 4:2:0 / 4K 30Hz 4:4:4 to 40m (70m at 1080p)
- USB / KVM - 280Mbps combined
- Bi-directional RS-232, IR & PoC



### HEX70ARCKIT

HDBaseT™ ARC Extender Set - 70m

- 4K 60Hz 4:2:0 / 4K 30Hz 4:4:4 to 40m (70m at 1080p)
- HDMI ARC & Optical Audio Return
- HDMI Loop out on TX, bi-directional IR & PoC



### POC11

HDBaseT™ 12-24V PoC (Power over Cable) Injector

- Bi-directional 12-24V power injection
- Compliant up to HDBaseT™3 specification
- Works with all Blustream HDBaseT™ extenders



### HEX70SLKIT

Slimline HDBaseT™ Extender Set - 70m

- 4K 60Hz 4:2:0 / 4K 30Hz 4:4:4 to 40m (70m at 1080p)
- Bi-directional IR & PoC
- Slimline chassis

HDBaseT™ Solutions







### Custom Pro Hub

Custom Pro Matrix supporting signals up to 4K 60Hz 4:4:4

The Custom Pro Matrix achieves new levels of both AV distribution performance and installer flexibility. Integrators can now easily specify their desired I/O structure and choose the additional control features required for a specific project.

#### Key Features

- 2-Way and 4-Way interchangeable input & output boards
- Optional control boards: IR Routing, Audio Breakout, RS-232
- HDBaseT™ specifications include 4K 60Hz 4:4:4 and HDR capabilities using CSC (Colour Space Conversion)
- 8x8 and 16x16 chassis available allowing any I/O structure to be created from 2x2 up to 16x16
- Pre-configured models available
- Advanced HDBaseT™ technology offering video and audio with zero latency
- Web interface module for control and configuration of Matrix
- 3rd Party drivers available for major control brands



### PRO88HBT100CS

8x8 HDBaseT™ CSC Matrix - 100m

- Supports 4K 60Hz 4:4:4 UHD video up to 70m
- Features 8 x HDMI inputs which can be independently routed to 8 x HDBaseT™ outputs
- Bi-directional RS-232, IR & PoC



### PRO88HDMI-V2

8x8 HDMI Matrix

- Features 8 x HDMI inputs which can be independently routed to 8 x HDMI outputs
- Supports bitstream passthrough of multichannel surround sound including object-based audio formats in line with HDMI specifications.
- Control via front panel, IR, RS-232 & TCP/IP



### PRO16HBT100CS

16x16 HDBaseT™ CSC Matrix - 100m

- Pre-configured Custom Pro matrix bundle with 16 x video inputs, 16 x video outputs, Audio breakout, and 2-way IR control
- Bi-directional IR & PoC
- 3rd Party drivers available for major commercial & residential control brands

Custom Pro Matrix

Custom Pro Input Cards (supporting 18Gbps)



**PRO-IN4HAB** 4-Way HDMI 2.0 Input Board with Source Audio Breakout



**PRO-IN2HAB** 2-Way HDMI 2.0 Input Board with Source Audio Breakout



**PRO-IN4HDA** 4-Way HDMI 2.0 Input Board, Dante® Breakout / Embedding, & Source Audio Breakout



**PRO-IN2H2TCS** 4-Way HDMI 2.0 & HDBaseT™ Input Board (2x HDMI / 2x HDBaseT™)

Custom Pro - Control & Feature Boards



**PRO-8IR-V2** 8-Way IR Control Board with 5V - 12V IR Conversion (not required for 16x16 chassis)



**PRO-8ABV** 8-Way Audio Breakout Board (includes line level volume control)



**PRO-8AB** 8-Way Audio Breakout Board



**PRO-8RS232** 8-Way RS-232 Control Board

Custom Pro HDBaseT™ Output Cards (supporting 18Gbps to 70m)



**PRO-OUT4HTCS** 4-Way Simultaneous HDBaseT™ / HDMI 2.0 Output Board - 4K 60Hz 4:4:4 to 70m (1080p up to 100m)



**PRO-OUT4TCS** 4-Way HDBaseT™ Output Board - 4K 60Hz 4:4:4 to 70m (1080p up to 100m)



**PRO-OUT2TCS** 2-Way HDBaseT™ Output Board - 4K 60Hz 4:4:4 to 70m (1080p up to 100m)

Custom Pro HDBaseT™ CSC Output Cards (supporting 18Gbps to 40m)



**PRO-OUT4TLS-V2** 4-Way Simultaneous HDBaseT™ / HDMI 2.0 Output Board - 4K 60Hz 4:4:4 to 40m (1080p up to 70m)



**PRO-OUT4TL-V2** 4-Way HDBaseT™ Output Board - 4K 60Hz 4:4:4 to 40m (1080p up to 70m)



**PRO-OUT2TL-V2** 2-Way HDBaseT™ Output Board - 4K 60Hz 4:4:4 to 40m (1080p up to 70m)

Custom Pro HDMI Output Cards (18Gbps)



**PRO-OUT4H-V2** 4-Way 18Gbps HDMI 2.0 Output Board



**PRO-OUT2H-V2** 2-Way 18Gbps HDMI 2.0 Output Board

# HDMI Distribution

- HDMI Switchers
- HDMI Splitters
- Multi-Format Presentation Switches
- Wireless Multi-Format Presentation
- Multi-Format Presentation
- HDMI Cables
- 8K HDMI Solutions
- HDMI Matrix
- HDMI Signal Management

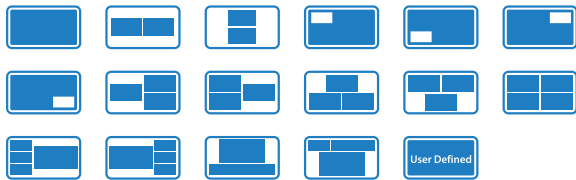




**MV41**

4x1 HDMI 2.0 Multi-view Switcher

- Supports full HDMI 2.0b - 4K 60Hz 4:4:4 and all HDR formats
- Multi-view output with custom re-size, positioning, PIP, PBP, POP functionality
- Single-frame seamless switching
- HDMI loop outputs for integration with Video over IP or HDBT matrix systems



**SW41AB-V2 / SW21AB-V2**

4K HDMI 2.0 Switches

- Features 4/2 x HDMI inputs which can be switched to a single HDMI output
- Auto-switching (HPD sensing) capabilities can be enabled / disabled
- Supports full HDMI 2.0 specification 4K UHD video (4K 60Hz 4:4:4)
- Control via RS-232, front panel and IR (remote control included)



**SP12CS**



**SP14CS**



**SP18CS**



4K HDMI 2.0 HDCP 2.2 Splitters

Our 4K HDMI 2.0 splitters distribute a single HDMI source to multiple simultaneous outputs with both digital (S/PDIF) and analogue audio breakout. The splitters support full HDMI 2.0 and HDCP 2.2 with video resolutions up to and including 4K 60Hz 4:4:4 with video down conversion on each output.

**Models & Description**

<b>SP12CS</b>	2-Way 4K HDMI 2.0 HDCP 2.2 Splitter
<b>SP14CS</b>	4-Way 4K HDMI 2.0 HDCP 2.2 Splitter
<b>SP18CS</b>	8-Way 4K HDMI 2.0 HDCP 2.2 Splitter

**Key Features**

- Supports HDMI 2.0 18Gbps specification including HDR
- Supports all industry standard video resolutions including VGA-WUXGA and 480i-4K
- Supports up to 4K UHD 60Hz 4:4:4
- HDMI audio breakout to analogue L/R audio and optical (S/PDIF) digital outputs concurrently





## MX44AVW

### 4x4 HDMI Architectural Video Wall Matrix

- 4K 60Hz 4:4:4 HDMI 2.0 Matrix with Seamless Switching
- Advanced EDID Management
- Video Scaling, with Multi-view and Video Wall capabilities
- Re-size / Re-position, PIP / PBP / POP Output & 1deg Rotation
- IP, RS-232, and IR Control



## AMF42AU

### Advanced Multi-Format Presentation Switch

- Seamless source switching with manual or auto source selection
- MIC input supports line level or 48v Phantom power
- HDBaseT™ output with advanced Colour Space Conversion (CSC) supports HDMI 2.0 18Gbps specification
- Dual HDMI / HDBaseT™ on output 2



## WMF51

### Wireless Multi-Format Presentation Switch

Wireless support for AirPlay, Miracast, Chromecast with Audio Breakout. 4K support for optional HDMI or USB-C Dongles.

#### Key Features

- Wireless connectivity with HDMI Multi-view Output
- Auto & seamless switching capabilities
- White board and on screen annotation with export functionality
- Dual LAN Connectivity, & USB touchback

HDMI Distribution



## WMF72

### HDMI, USB-C & Wireless Multi-Format Presentation Switch

Wireless support for AirPlay, Miracast, Chromecast with Audio Breakout. 4K support for optional HDMI or USB-C Dongles.

#### Key Features

- Wireless connectivity with dual HDMI Multi-view Output
- New dual camera switching functionality
- White board and on screen annotation with export functionality
- Dual LAN Connectivity, & USB touchback

#### WMF-HDMI-D WMF-USBC-D

4K Wireless Dongles for WMF51 & WMF72



HDMI™



**MFP62**

6 Input 2 Output Multi-Format Presentation Switch

- Features 3 x HDMI, 1 x USB-C, 1 x DisplayPort™ & 1 x VGA input which can be routed to dual HDMI outputs
- Supports resolutions up to 4K UHD 60Hz 4:4:4
- Features MIC mixer over source audio with independent level adjustment (MIC ducking)
- Audio breakout to analogue L/R audio and Coaxial digital outputs concurrently



HDMI™



**HD11CTRL-V2**

HDMI In-line Controller with Web GUI

- Automated display On / Off control via CEC, RS-232 or IR
- Relay control for interface to third party devices such as automated projector screens
- Contact closure input for connection from third party devices such as sensors or switches
- 10x configurable macros with up to 10x time delays, serial, IR or CEC commands per macro



HDMI™



**HDMI48G**

Precision 48Gbps 8K HDMI Cable

**Models & Description**

<b>HDMI48G-1</b>	Precision 48Gbps HDMI Cable - 1m
<b>HDMI48G-2</b>	Precision 48Gbps HDMI Cable - 2m
<b>HDMI48G-3</b>	Precision 48Gbps HDMI Cable - 3m
<b>HDMI48G-5</b>	Precision 48Gbps HDMI Cable - 5m
<b>HDMI48G-10</b>	Precision 48Gbps AOC HDMI Cable - 10m
<b>HDMI48G-15</b>	Precision 48Gbps AOC HDMI Cable - 15m
<b>HDMI48G-30</b>	Precision 48Gbps AOC HDMI Cable - 30m

HDMI Distribution

HDMI™



**HDMI18G-100 / HDMI18G-50**

Long Distance 18Gbps HDMI Cable Active Optical Cable (AOC)

**Models & Description**

<b>HDMI18G-50</b>	18Gbps HDMI Cable AOC - 50m
<b>HDMI18G-100</b>	18Gbps HDMI Cable AOC - 100m

HDMI™



**SP24AB-8K**

4-Way 8K HDMI 2.1 Switchable Splitter

- Features 2x selectable HDMI 2.1 inputs that are split to all 4x outputs concurrently
- Supports up to 8K 60Hz YCbCr 4:2:0 10bit, 8K 30Hz RGB/YCbCr 4:4:4 10bit, or 4K 120Hz RGB/YCbCr 4:4:4 10bit (40Gbps maximum)
- Supports ALLM (Auto Low Latency Mode) & VRR (Variable Refresh Rate) digital outputs concurrently
- Optical S/PDIF and analogue audio breakout. RS-232 and IR control



HDMI™



**SW41AB-8K**

2x2 8K HDMI 2.1 Matrix Switcher

- Features 4x HDMI inputs which can be switched to a single HDMI output
- Supports up to 8K 60Hz YCbCr 4:2:0 12bit, 8K 30Hz RGB/YCbCr 4:4:4 12bit, or 4K 120Hz RGB/YCbCr 4:4:4 12bit (48Gbps maximum)
- Optical S/PDIF and analogue audio breakout, RS-232 and IR control
- Supports ALLM (Auto Low Latency Mode) & VRR (Variable Refresh Rate) digital outputs concurrently



HDMI Distribution

HDMI™



**MX22AB-8K**

2x2 8K HDMI 2.1 Matrix

- Features 2x HDMI inputs which can be independently routed to 2x HDMI outputs
- Supports up to 8K 60Hz YCbCr 4:2:0 10bit, 8K 30Hz RGB/YCbCr 4:4:4 10bit, or 4K 120Hz RGB/YCbCr 4:4:4 10bit (40Gbps maximum)
- Supports ALLM (Auto Low Latency Mode) & VRR (Variable Refresh Rate) digital outputs concurrently
- Optical S/PDIF and analogue audio breakout. RS-232 and IR control



HDMI™



**SM11EARC-8K**

8K HDMI 2.1 Signal Manager with eARC Breakout

- Can help to solve most HDMI EDID, HDCP, compatibility and handshaking issues
- Supports up to 8K 60Hz YCbCr 4:2:0 12bit, 8K 30Hz RGB/YCbCr 4:4:4 12bit, or 4K 120Hz RGB/YCbCr 4:4:4 12bit (48Gbps maximum)
- Supports ALLM (Auto Low Latency Mode) & VRR (Variable Refresh Rate) digital outputs concurrently
- Audio Embedding, Breakout, and eARC / ARC Breakout







**CMX88CS**

Contractor 8x8 4K 18Gbps HDMI2.0 Matrix

- Features 8 x HDMI inputs which can be independently routed to 8 x HDMI outputs
- Supports HDMI 2.0 18Gbps specification including HDR
- Supports up to 4K UHD 60Hz 4:4:4



**CMX44CS**

Contractor 4x4 4K 18Gbps HDMI2.0 Matrix

- Features 4x HDMI inputs which can be independently routed to 4x HDMI outputs
- Supports HDMI 2.0 18Gbps specification including HDR
- Supports up to 4K UHD 60Hz 4:4:4

**NEW**



**CMX42CS**

Contractor 4x2 4K 18Gbps HDMI2.0 Matrix

- Features 4 x HDMI inputs which can be independently routed to 2 x HDMI outputs
- Supports HDMI 2.0 18Gbps specification including HDR
- Supports up to 4K UHD 60Hz 4:4:4



**SM11 | SM11ARC**

Advanced HDMI 2.0 Signal Manager

- Can help to solve most HDMI EDID, HDCP, compatibility and handshaking issues
- Supports full HDMI 2.0 specification 4K UHD video (4K 60Hz 4:4:4)
- Can be configured to work as either a HDMI audio de-embedder or audio embedder
- *HDMI ARC to Optical audio breakout on the SM11ARC*



**HD11AU**

HDMI Audio Embedder / De-Embedder

- Can help to solve most HDMI EDID, HDCP, compatibility and handshaking issues
- Supports full HDMI 1.4 specification (4K 60Hz 4:2:0), HDCP 1.4
- Can be configured to work as either a HDMI audio de-embedder or audio embedder



**HD12DB-V2**

7.1ch Dolby® / DTS Down Mixing DAC 2-Way HDMI Splitter & Scaler

- Supporting Dolby Audio® Technology
- 7.1ch Dolby® or DTS embedded audio to a true stereo 2ch signal available on HDMI, optical and analogue audio outputs concurrently
- HDMI input supporting 4K 60Hz 4:4:4 that is replicated to 2 x HDMI outputs - 1x native pass-through, 1x scaled (with audio down-mix)

\*Dolby Audio is a registered trademark of Dolby Laboratories Licensing Corporation.

HDMI Distribution

# USB & KVM Solutions

- USB Extension
- USB3 Switching
- USB3 Extension
- USB Cables





UEX3H UEX3H-WP-US UEX3H-WP-EU

- UEX3H** - USB 3.2 Gen1 Extender - Host
- UEX3H-WP-EU** - USB 3.2 Gen1 Extender Wall Plate - Host
- UEX3H-WP-US** - USB 3.2 Gen1 Extender Wall Plate - Host

The UEX3H is a USB Host solution that utilises HDBaseT™ technology to allow for remote connectivity of USB 3.2 Gen1 (5Gbps) Devices at distances of up to 100m over single CAT6A. The UEX3H allows 2 x USB Hosts to be switched between the 2 x local USB Devices as well as the Devices connected to a remote compatible Blustream USB HDBaseT Device extender.

**Key Features**

- 1 x USB-A & 1 x USB-C port for connection to host devices with manual or auto switching
- 1 x USB-C host charging port for connection of external power supply to power host device
- 2 x USB-A ports for connection to local USB devices

Specify a combination of host and device end points to perfectly suit the project requirements.

**1** Select the preferred form factor for the end point located at the PC (Host).

PC Server Laptop NUC

USB 3.2 Gen1 5Gbps AUTO SWITCHING USB-C PoC



UEX3D UEX3D-WP-US UEX3D-WP-EU

- UEX3D** - USB 3.2 Gen1 Extender - Device
- UEX3D-WP-EU** - USB 3.2 Gen1 Extender Wall Plate - Device
- UEX3D-WP-US** - USB 3.2 Gen1 Extender Wall Plate - Device

The UEX3D is a USB Device solution that utilises HDBaseT™ technology to allow for remote connectivity of USB 3.2 Gen1 (5Gbps) Hosts at distances of up to 100m over single CAT6A. The UEX3D allows 4 x USB peripheral devices to be distributed to a remote compatible Blustream USB HDBaseT Host extender.

**Key Features**

- 2 x USB-A & 2 x USB-C ports for connection to local devices
- 1 x USB-C host charging port for connection of external power supply to power USB-C host device
- Combined USB3.2 Gen1 data transfer rate up to 5Gbps\*

\*Signal distribution bandwidth and distance are subject to length of device and host USB cables, and CAT cable type. It is recommended to use a minimum of CAT6A cabling.

**2** Select the preferred form factor for the end point with the peripheral devices.

Camera (USB VC) USB Audio (Mic) Mass storage Keyboard Mouse

USB 3.2 Gen1 5Gbps KVM USB-C PoC



**UEX3C-KIT**

USB 3.2 Extender Set - 100m

- Extend USB 3.2 Gen 1 signals up to 5Gbps over 100m of CAT6A
- Supports USB 3.2 signal extension
- PD Power Insertion for Host
- No Drivers or Downloads



**UEX100E-KIT**

USB 2.0 HDBaseT™ Extender Set

- Bi-directional Ethernet pass-through (100Mbps)
- Bi-directional IR & RS-232 pass through
- Transmitted data bandwidth up to 480Mbps (combined)
- Supports 2ch PCM Analogue Audio pass through (direction selectable)



**UEX50B-KIT**

USB 2.0 Extender Set - 50m

- Extends USB up to a distance of 50m over a single CAT cable
- Supports USB 2.0 signal extension
- Backwards compatible with USB 1.1 devices
- Combined transmitted data bandwidth up to 480Mbps



**MX44KVM**

4x4 USB KVM Matrix

- 4x4 USB KVM Matrix allowing up to 4 x USB peripheral devices to be switched between 4 x host devices
- USB 3.0 connectivity with data transfer rates up to 5Gbps
- Backwards compatible with USB 2.0 and 1.1
- Plug-and-play with no drivers, downloads, or software required



**SW12USB**

USB 3.2 Gen2 Hub - 2 x Host Switching Hub with 4 x Device Connections & web-GUI

- USB 3.2 Gen 2 signals up to 10Gbps
- Manual, API, or auto switching for up to 4 x devices between 2 x hosts
- PD Power Insertion for Host
- No Drivers or Downloads





### USB3C10

#### Precision 10Gbps USB-C AOC Cable (10m)

Our active Precision USB-C cables utilise integrated circuits that measure, analyse and adjust the data and video signal to ensure support for up to 10Gbps of data bandwidth.

- Transmits video resolutions up to and including 4K
- Data transfer rates up to 10Gbps
- USB 3.1 Gen 2 SuperSpeed Plus Type C M-M
- Backward compatible with USB 2.0 and 1.1



### USBCM

#### Micro Form USB-C Passive Cable (1-3m)

Our Micro Form USB-C cables offer data, power and video pass-through for equipment. USB 3.1 Gen 1 design allows transfer speeds supported up to 5Gbps and video resolutions from USB-C source devices allow for up to 4K 60Hz 4:4:4 resolutions to be distributed.

#### Models & Description

<b>USBCM1</b>	Micro Form USB-C Passive Cable 1m
<b>USBCM2</b>	Micro Form USB-C Passive Cable 2m
<b>USBCM3</b>	Micro Form USB-C Passive Cable 3m



### USBABM

#### Micro Form USB 2.0 A-B (1-3m)

Our Micro Form USB Type A to Type B cables offer a discreet plug design for tight spaces and compact installations. USB transfer rates of up to 480Mbps are supported with backwards compatibility with USB 1.1 devices.

#### Models & Description

<b>USBABM1</b>	Micro Form USB Type A to Type B 1m
<b>USBABM2</b>	Micro Form USB Type A to Type B 2m
<b>USBABM3</b>	Micro Form USB Type A to Type B 3m



### USB3AMF

#### Precision 10Gbps USB-A Male-Female AOC Cable

Our active Precision USB-A cables utilise integrated circuits that measure, analyse and adjust the data and video signal to ensure support for up to 10Gbps of data bandwidth.

- Data transfer rates up to 10Gbps
- USB 3.1 Gen 2 SuperSpeed Plus Type A M-F
- Backward compatible with USB 2.0 and 1.1

#### Models & Description

<b>USB3AMF10</b>	USB-A Male-Female AOC Cable 10m
<b>USB3AMF15</b>	USB-A Male-Female AOC Cable 15m

# Dante® Solutions

- HDMI and Dante® Switching
- Dante® Networked Audio Amplifiers
- Dante® Wall Plates
- Dante® Converters
- Dante® Integration



Dante®



## SW42DA-V2

4-Way HDMI Switcher with Multi-Channel Dante® Audio Breakout

- 4K 60Hz 4:4:4 HDMI Pass-through
- 7.1ch Downmixing with Dante® / AES67 Encoding (8ch and 2ch downmixed)
- Analogue & Optical S/PDIF Audio Breakout



Dante®



## DA1414

14x14 Dante® Audio Matrix

- 8x input, and 8x output Dante audio connections
- 4x analogue or MIC inputs with 48V phantom power, and 4x analogue audio output connections
- USB-B or USB-C audio connectivity
- Dual network connections for redundancy





Dante®

### NPA100DA

#### Networked Power Amplifier with Dante®

Our NPA100DA networked audio zone amplifier delivers advanced audio integration within a commercial or residential AV installation.

The NPA100DA features a 2x 50W digital amplifier (1 x 100W mono) or 70V / 100V hi-level constant voltage output, dedicated LFE subwoofer output, Dante audio integration and 2ch balanced / un-balanced audio outputs.

The NPA100DA supports a variety of inputs including 2ch Dante audio, HDMI ARC, MIC audio with 48v Phantom power support, optical audio and 2ch balanced / un-balanced analogue audio.

The NPA100DA can be powered via PoE++ from a compatible network switch, or locally should the switch not support PoE++. The unit also includes the ability to lower the amplifier power output subject to PoE capabilities, support for combined or independent LAN and Dante connections, DSP with a 10 band EQ, audio delay for lip sync correction, independent gain control for audio inputs and control via front panel, IR, RS-232, TCP/IP, web Gui or 12v trigger.

#### Audio inputs:

- 2ch Dante®/AES67 audio input
- HDMI ARC with CEC volume control
- MIC audio input with Phantom power and auto-ducking
- 2ch Analogue audio input – unbalanced & balanced
- 1 x Optical (S/PDIF) audio input

#### Audio Outputs:

- 2ch Dante®/AES67 audio output
- 2ch variable/fixed analogue output, balanced/un-balanced
- 1 x LFE subwoofer output



Dante®

### NPA70DA

#### Networked Power Amplifier with Dante®

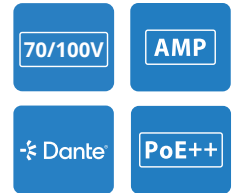
- Advanced network audio amplifier with Dante integration
- Supports power via PoE++ on Dante LAN connection or local power supply
- Local 12V input trigger for automated power control

#### Audio inputs:

- 2ch Dante®/AES67 audio input

#### Audio Outputs:

- 4-Pin Phoenix connector



Dante®

### NPA20DA

#### Networked Amplifier with Dante®

- Advanced network audio amplifier with Dante integration
- Supports 2 x 10W @ 4 / 8 ohm, 1 x 20W @ 4 / 8 ohm
- Local 12V input trigger for automated power control

#### Audio inputs:

- 2ch Dante®/AES67 audio input

#### Audio Outputs:

- 4-Pin Phoenix connector





**DA11ABL-WP-US / EU-V2**

Bluetooth® & Analogue Audio Dante® Wall Plate

- Dante® network wall plate interface for Bluetooth and analogue L/R audio inputs, and L/R audio outputs
- Converts 2ch Bluetooth, or un-balanced audio sources to Dante® audio
- Converts 2x Dante® audio channels to un-balanced audio outputs
- Configurable Bluetooth naming allows for simple discovery of the unit



**DA22XLR-WP-US / EU-V2**

XLR Dante® Audio Wall Plate

- Dante® network wall plate interface for 2 x audio inputs and 2 x audio outputs
- Converts 2 x balanced / unbalanced / MIC audio sources to Dante® audio channels
- Converts 2 x Dante® audio channels to balanced / unbalanced audio outputs
- Switchable 48V Phantom power for each MIC XLR input



**DA11AEN-V2**

Analogue Audio to Dante® Encoder



**DA11ADE-V2**

Dante® to Analogue Audio Decoder



**DA11USB-V3**

Dante® USB Audio Encoder / Decoder



**DA11XLR**

Dual XLR to Dante® Encoder



**DA22OPT**

Dante® Optical S/PDIF Encoder / Decoder



**DA11ARC**

2ch HDMI ARC to Dante® Encoder







### DA22DIG

2x2 Digital & Analogue Dante® Converter

- Encodes 2ch analogue audio or digital audio are converted to Dante® digital signal
- Decodes a Dante® digital signal to 2ch analogue audio and digital audio
- Selectable digital audio between optical S/PDIF and coaxial RCA inputs
- Configurable MIC audio input with 48V Phantom power



### DA44AU

4x4 Dante® Digital Audio Converter

- Features 4 x analogue audio inputs that are converted to a Dante® compatible signal
- Features conversion of 4 x Dante® signals to analogue audio outputs
- Analogue audio inputs support both balanced and unbalanced audio + MIC line level signals
- MIC line level supports 48V Phantom power

### RSU-DA44

19" 1U Rack Shelf Mount for DA44AU



### IP350UHD-TX / RX

4K 60Hz 4:4:4 UHD Video over 1Gb Network featuring Dante®

- Dual RJ45 network ports configurable for independent or combined HDMI and Dante® signal distribution
- SFP port for independent or combined HDMI and Dante® signal distribution over a single fibre cable



### IP250UHD-TX / RX

4K 30Hz 4:2:0 UHD Video over 1Gb Network featuring Dante®

- Dual RJ45 network ports configurable for independent or combined HDMI and Dante® signal distribution
- SFP port for independent or combined HDMI and Dante® signal distribution over a single fibre cable



### PRO-IN4HDA (Custom Pro Matrix Board)

4-Way HDMI 2.0 Input Board, Dante® Breakout / Embedding, and Source Audio Breakout

- Each HDMI input includes independent 2ch Dante audio breakout allowing connection to a Dante audio solution (supports 2ch PCM)
- Supports 4x 2ch Dante audio inputs allowing audio embedding onto the HDMI inputs

# Audio Solutions

- Audio Matrix
- Audio Amplifiers
- Audio Extension
- Multi-channel Audio Integration
- Bluetooth® Audio Integration
- Audio Accessories
- Audio Conversion



## DMP168

### 16x8 Digital & Analogue Audio Matrix Processor

The DMP168 Audio Matrix features 8x Analogue L/R Inputs, 4 x Digital Coaxial Inputs and 4 x Digital Optical Inputs that can each be routed independently to 8x Analogue L/R Outputs.

Enhanced features include source mixing, 4 band parametric equaliser, low and high pass filters, independent gain adjustment, audio ducking, lip sync correction and optional subwoofer integration.

### Key Features

- 8 x Analogue L/R Inputs, 4 x Digital Coaxial Inputs, 4 x Digital Optical Inputs
- 8 x Analogue L/R Outputs
- Volume, 4 band parametric equaliser and low and high pass filter control
- Independent gain adjustment for all Analogue and Digital inputs
- Lip-sync delay per input
- Ability to re-assign audio outputs for subwoofer use (up to 4 x 2.1ch outputs)
- Ability to combine L/R audio to mono on all outputs
- Ability to link outputs together for single universal volume control
- Audio sensing supports programmable events based on the presence of audio
- 48kHz 24-bit sampling rate for A/D and D/A conversion
- Digital audio inputs support resolutions up to 192kHz/24 bit
- Control via front panel, IR, RS-232 and TCP/IP





### NPA20ANA

#### Network Powered Analogue Audio Amplifier

- 2x10W (1x20W) i2D Class Digital Amplifier
- Balanced / unbalanced analogue audio input and loop out
- Web GUI/API for Gain, EQ, delay, and volume control
- Low Impedance (4/8ohm) Stereo/Mono speaker output



### NPA20ARC

#### Network Powered HDMI ARC & Analogue Audio Amplifier

- 2x10W (1x20W) i2D Class Digital Amplifier
- HDMI ARC, and Balanced / unbalanced analogue audio inputs, with analogue loop out
- Web GUI/API for gain, EQ, delay, switching and volume control
- Low Impedance (4/8ohm) Stereo/Mono speaker outputs



### CAT100EARC

#### eARC/ARC Over CAT

- Supports eARC/ARC distribution distances of up to 100m
- Supports Optical audio distribution distances of up to 200m
- Supports CEC pass-through when HDMI eARC/ARC mode selected



### CAT100AU

#### Digital Audio Over CAT

- Extend optical and coaxial digital audio signals up to distances of 300m over a single CAT cable
- Both optical and coaxial digital can be distributed at the same time



### PAC500AU

#### Passive Audio Over CAT

- Extend analogue audio signals up to distances of 500m over a single CAT cable
- Passive solution - Extender kit does not require a power supply



### HD12DB-V2

7.1ch Dolby® / DTS Down Mixing DAC  
2-Way HDMI Splitter & Scaler

- Supporting Dolby Audio® Technology
- Converts up to 7.1ch Dolby® or DTS embedded audio to a true stereo 2ch signal available on HDMI, optical and analogue audio outputs concurrently
- Features 1 x HDMI input supporting 4K UHD video (4K 60Hz 4:4:4) that is replicated to 2 x HDMI outputs
- Features full HDMI video down-scaling from 4K 60Hz 4:4:4 down to 1080p



### DAC13DB

Digital Audio Converter with Down Mixing

- Supporting Dolby Audio® Technology
- Down mixes 5.1ch Dolby Audio® and DTS Audio from optical toslink or coaxial digital audio input signals from a compatible source device to 2ch stereo audio
- Simultaneously outputs downmixed 2ch audio via analogue, optical toslink or coaxial digital audio outputs
- Audio signals up to 24-bit with sampling rates up to 96kHz



\* Dolby Audio is a registered trademark of Dolby Laboratories Licensing Corporation.



### SW42DA

4-Way HDMI Switcher with Multi-Channel Dante® Audio Breakout

- 4K 60Hz 4:4:4 HDMI Pass-through
- 7.1ch Downmixing with Dante® / AES67 Encoding (8ch and 2ch downmixed)
- Analogue & Optical S/PDIF Audio Breakout



### BLUARC

HDMI Bluetooth® Audio Extractor & Embedder

- Bluetooth 5.0 audio embedding onto HDMI signal path, with de-embedding from the HDMI signal to up to 2x audio outputs
- Supports HDMI 2.0b 18Gbps 4K UHD 60Hz 4:4:4 pass-through including HDR





### AD11AU

Analogue Audio Delay Processor with Volume Control

- In-line 2ch analogue audio delay with line-level volume control
- Supports 48 KHz / 24 bit sample rates
- Selectable audio delay from 50-1,000ms
  - 0 - 500ms in steps of 50ms
  - 500 - 1,000ms in steps of 100ms
- Adjustable line level volume control from -75dB to 0dB



### ARC11

ARC Audio Breakout

- Extracts audio from the Audio Return Channel of a HDMI signal
- Features analogue audio breakout of 2ch PCM audio signals, where source audio is 2ch PCM
- Supports up to 192kHz sample rates at 24-bit depth
- Features optical audio breakout of multi-channel and 2ch audio formats



### DAC12AU

Digital to Analogue Converter (DAC)

- Digital to Analogue audio Converter converts either optical or coaxial digital to analogue stereo left / right audio output
- Converts optical digital audio input to coaxial digital audio output
- Auto-detects digital connection in use



### ADC11AU

Analogue to Digital Audio Converter (ADC)

- ADC (Analogue to Digital Audio Converter) converts analogue left / right stereo audio input to both S/PDIF optical and coaxial digital PCM outputs
- Both optical digital and coaxial digital output simultaneously



### DIG11AU

Digital Audio Converter

- Converts digital audio formats (optical to optical and coax, or, coax to optical or coax)
- Both optical and coaxial digital outputs work concurrently regardless of input type selected

# Power Management

- Managed PDU's
- Managed Low Voltage PDU





### PWR8IEC

#### 8-way IEC Power Controller

- Monitoring and metering of: voltage, current, power, and energy consumption
- Overload protection and interference filtering
- 24/7 scheduling and power on/off sequencing
- Relays for automated switching
- Remote monitoring with password authentication



### PWR4IEC

#### 4-way IEC Power Controller

- Monitoring and metering of: voltage, current, power, and energy consumption
- Overload protection and interference filtering
- 24/7 scheduling and power on/off sequencing
- Relays for automated switching
- Remote monitoring with password authentication



### PWR8VDC

#### 8-way Low Voltage DC Power Controller

The PWR8VDC is an outlet-level metered and switched smart PDU. The unit features 1 x IEC C14 inlet for power, and 8 x variable voltage output outlets for controlled supply to low-power consumption devices.

The PDU supports TCP/IP and RS-232 control, and a redundant TCP/IP port as a back-up. Front panel buttons for manual switching of power to individual outlets, and a single mains switch for overall system power. Relay connections (x8), and 2 x sensor ports can also be used for automatic control of power to both inlet and individual outlet stages when triggered from 3rd party control platforms or BMS systems. Remote access and monitoring can be set-up and achieved via the web-GUI.

#### Key Features

- 8x independent low voltage 5V - 24V DC, or 5V 1A USB outputs
- Monitoring and metering of: voltage, current, power, and energy consumption
- 24/7 scheduling and power on/off sequencing
- Overload protection and interference filtering
- Relays for automated switching
- Remote monitoring with password authentication



# HDMI™ Cables

- Certified 8K HDMI Cables (48Gbps)
- Micro-Form 8K HDMI Cables

# HDMI™





# PRECISION **48** GBPS



## HDMI48G

### Precision 48Gbps 8K HDMI Cable

Whether you're gaming, streaming, or enjoying your favourite movies and TV shows, our new 48G 8K Certified Ultra High Speed HDMI 2.1 cable is the ultimate solution for a premium AV experience.

- 48Gbps Bandwidth for support of all HDMI 2.1 resolutions
- Supports 8K video up to 60Hz and 4K video up to 120Hz
- Supports dynamic HDR 10-bit, 12-bit and 16-bit colour depths
- Gold plated locking tabs for secure connection

# HDMI™



## HDMIM8K

### Micro Form 8K HDMI Cable

Our Micro Form 8K cable range combines robust performance with value for the custom installation market. This range of 48Gbps HDMI cables support video resolutions including 4K 120Hz and 8K 60Hz.

- Discrete design for tight spaces and compact installations
- Transmit all video resolutions up to and including 8K
- Ultra High Speed with Ethernet
- Supports eARC (Enhanced Audio Return Channel)

#### Models & Description

<b>HDMI48G-1</b>	Precision 48Gbps HDMI Cable - 1m
<b>HDMI48G-2</b>	Precision 48Gbps HDMI Cable - 2m
<b>HDMI48G-3</b>	Precision 48Gbps HDMI Cable - 3m
<b>HDMI48G-5</b>	Precision 48Gbps HDMI Cable - 5m
<b>HDMI48G-10</b>	Precision 48Gbps AOC HDMI Cable - 10m
<b>HDMI48G-15</b>	Precision 48Gbps AOC HDMI Cable - 15m
<b>HDMI48G-30</b>	Precision 48Gbps AOC HDMI Cable - 30m

#### Models & Description

<b>HDMIM8K-1</b>	Micro Form 8K HDMI Cable - 1m
<b>HDMIM8K-2</b>	Micro Form 8K HDMI Cable - 2m
<b>HDMIM8K-3</b>	Micro Form 8K HDMI Cable - 3m
<b>HDMIM8K-5</b>	Micro Form 8K HDMI Cable - 5m
<b>HDMIM8K-7</b>	Micro Form 8K HDMI Cable - 7m
<b>HDMIM8K-10</b>	Micro Form 8K HDMI Cable - 10m
<b>HDMIM8K-10</b>	Micro Form 8K HDMI Cable - 3m - Bulk pack (x10 units)
<b>HDMIM8K-15</b>	Micro Form 8K HDMI Cable - 2m - Bulk pack (x15 units)
<b>HDMIM8K-25</b>	Micro Form 8K HDMI Cable - 1m - Bulk pack (x25 units)



# BLUSTREAM

# 10

YEAR

# ANNIVERSARY

Founded in Melbourne, Australia, Blustream is the creation of an ambitious team of AV product managers. Utilising a wealth of experience within the consumer electronics and multi-room AV industry, the team takes pride in delivering AV distribution products that offer more for the AV architect and installer, more in terms of performance and reliability, and more in terms of value for money.

#### **Blustream Ltd**

The Service Station, Melton Road,  
Nottinghamshire, LE14 3QG, UK  
Tel: +44 0115 824 7000

#### **Blustream Australia**

24 Lionel Road, Mt. Waverley,  
Victoria 3149, Australia,  
Tel: +61 3 8691 1999

#### **Blustream USA**

1420 Perron Rd East, Suite 200 (c/o ITS),  
Mendota Heights, MN 55120  
Tel: +1 (952) 333-8411

#### **Blustream SL**

Calle Oro 45, Nave 10,  
28770, Colmenar Viejo, Madrid, Spain  
Tel: +34 911 232 072

[www.blustream.co.uk](http://www.blustream.co.uk)